



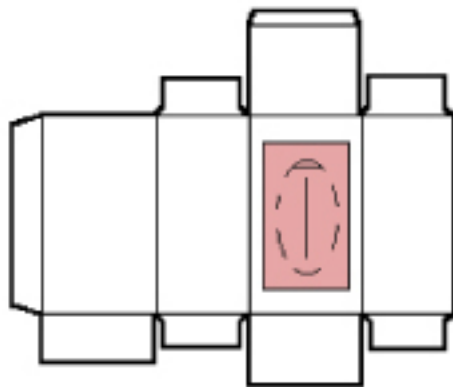
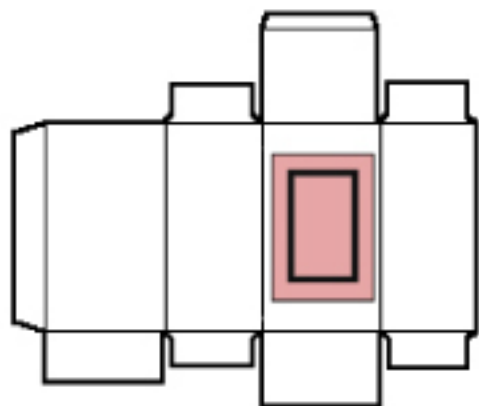
WINDOW PATCHER

Model: HWP1000 / 1000DBF

Automatic window patching process of carton feed, gluing, film cutting, slitting and affixing, and delivery for various kinds of die cut cartons, which is suitable for patching "windows" on "look through" boxes like cosmetic box, gift box, liquor box, tissue box, etc



Innovative technology combined with proven engineering offers the best in productivity and efficiency. Low investment costs and high processing performance guarantee future success. These principles guide the design of our window patching machines.



PSG Group is able to source quality film on a global scale. Our experience in the industry ensures that we have premium and reliable sources raw materials. ISO 9001:2000. Because we have developed trading agreements with almost all the world's manufacturers of PET film, we have eliminated for our customers all the inconveniences of: minimum order quantity, shipping and clearance problems by many





Model : HWP1000 / 1000DBF

Machine Specification

Model	HWP1000BF	HWP1000DBF
Blank Length	100 - 710mm	100 - 710mm
Blank Width	80 - 1000mm	80 - 480mm
Film Length	50 - 520mm	50 - 520mm
Film Width	30 - 840mm	30 - 400mm
Film Thickness	0.03mm - 0.20mm	
Feed Material	Cardbord, Eflute corrugated cardboard	
Max Working Speed		
Length Over Than 330mm	150 sheets/min	300 sheets/min
Length Less Than 330mm	300 sheets/min	600 sheets/min
Main Motor	2.2KW	
Glue Wheel Motor	40W	
High Speed Blower [A]	3.7KW	
Air Compressor	0.75KW	
High Sped Blower [B]	2.6KW	
Total Power Required	9.29KW	
Overall Dimensions	5400 x 3110 x 2200mm [l x b x h]	

The paper step-feed mechanism is available, which cooperates with the conveyor belt of high friction coefficient to ensure exact paper feeding at a high speed. The Paper is fed by the chain system push mode so that the paper can be orientated accurately.

A detection system of electronic tracking and the control system for single or double sheet is suitable to various size papers. With high-pressure blowers with dual motors, which blows strongly through the pair of pipes increase the efficiency of the machine and production. Cutting length may be adjusted randomly due to application of a Continuously Variable Transmission imported from Germany.

The mechanism for films dividing and holes opening can prepare and adjust the film opening position wherever you want. The conveyor belts deliver papers in stack-press way, therefore films may keep close to each other efficiently.

AL SALEEM PRINTING EQUIPMENTS TRADING LLC
Tel : +9716 53 480 53, Fax + 9716 53 480 54
Web: www.alsaleemprintingequipments.com
Email : saleemww@eim.ae